

TG Grade 8 Flute - Scales and Arpeggios

The following scales to be performed **f** or **p** from memory; tongued, slurred, staccato-tongued or using mixed articulation, as requested by the examiner.

Each page of the following exercises is devoted to one key signature.

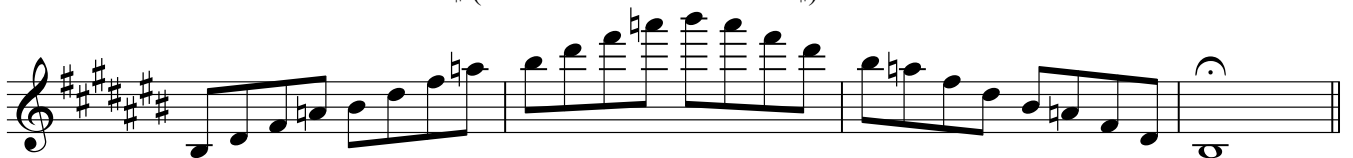
C# major scale



C# major arpeggio



Diminished 7th. on B# (Dominant minor 9th. in C#)



A# melodic minor scale



A# harmonic minor scale



A# minor arpeggio



C# chromatic scale

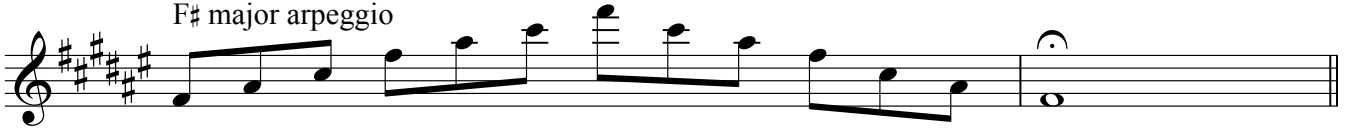


TG grade 8 flute

F# major scale



F# major arpeggio



Diminished 7th. on E# (Dominant minor 9th. in F#)



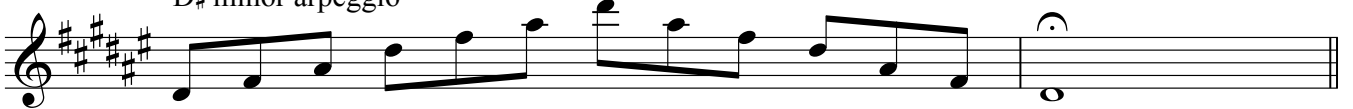
D# melodic minor scale



D# harmonic minor scale



D# minor arpeggio



F# chromatic scale



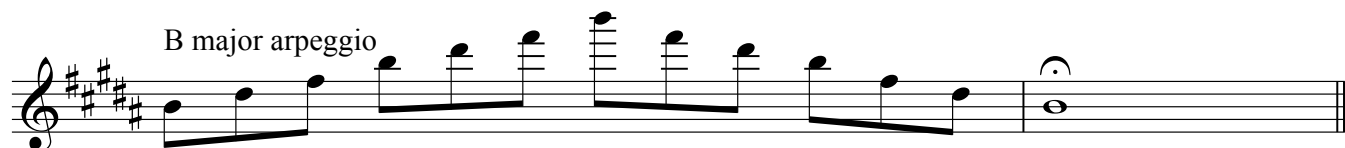
TG grade 8 flute

B major scale



Musical notation for the B major scale, starting on B4 and ending on B5. The scale is written in treble clef with a key signature of three sharps (F#, C#, G#). The notes are B, C#, D, E, F#, G#, A, B, C#, D, E, F#, G#, A, B. The first four notes are quarter notes, the next four are eighth notes, and the last four are quarter notes. The final B is a half note.

B major arpeggio



Musical notation for the B major arpeggio, starting on B4 and ending on B5. The notes are B, C#, D, E, F#, G#, A, B. The first four notes are quarter notes, the next four are eighth notes, and the final B is a half note.

G# melodic minor scale



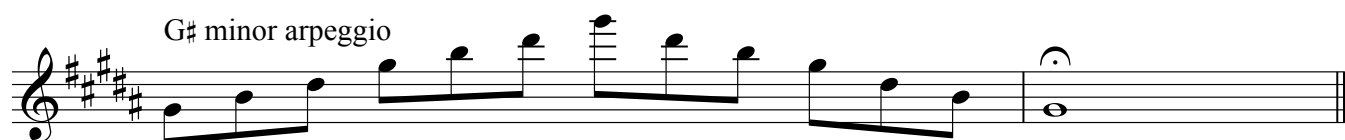
Musical notation for the G# melodic minor scale, starting on G#4 and ending on G#5. The scale is written in treble clef with a key signature of three sharps (F#, C#, G#). The notes are G#, A, B, C#, D, E, F#, G#, A, B, C#, D, E, F#, G#. The notes D, E, and F# are marked with an asterisk (*). The first four notes are quarter notes, the next four are eighth notes, and the last four are quarter notes. The final G# is a half note.

G# harmonic minor scale



Musical notation for the G# harmonic minor scale, starting on G#4 and ending on G#5. The scale is written in treble clef with a key signature of three sharps (F#, C#, G#). The notes are G#, A, B, C#, D, E, F#, G#, A, B, C#, D, E, F#, G#. The notes D, E, and F# are marked with an asterisk (*). The first four notes are quarter notes, the next four are eighth notes, and the last four are quarter notes. The final G# is a half note.

G# minor arpeggio



Musical notation for the G# minor arpeggio, starting on G#4 and ending on G#5. The notes are G#, A, B, C#, D, E, F#, G#. The notes D, E, and F# are marked with an asterisk (*). The first four notes are quarter notes, the next four are eighth notes, and the final G# is a half note.

B chromatic scale



Musical notation for the B chromatic scale, starting on B4 and ending on B5. The scale is written in treble clef with a key signature of three sharps (F#, C#, G#). The notes are B, B#, C, C#, D, D#, E, E#, F, F#, G, G#, A, A#, B. The notes B#, C, D#, E#, F, G, A#, and B are marked with an asterisk (*). The first four notes are quarter notes, the next four are eighth notes, and the last four are quarter notes. The final B is a half note.



Musical notation for the B chromatic scale, starting on B4 and ending on B5. The scale is written in treble clef with a key signature of three sharps (F#, C#, G#). The notes are B, B#, C, C#, D, D#, E, E#, F, F#, G, G#, A, A#, B. The notes B#, C, D#, E#, F, G, A#, and B are marked with an asterisk (*). The first four notes are quarter notes, the next four are eighth notes, and the last four are quarter notes. The final B is a half note.

TG grade 8 flute

E major scale



E major arpeggio



Dominant 7th. arpeggio in E



C# melodic minor scale



C# harmonic minor scale



C# minor arpeggio



E chromatic scale



TG grade 8 flute

A major scale



Musical notation for the A major scale, starting on A4 and ending on A5. The scale is written in treble clef with a key signature of three sharps (F#, C#, G#). The notes are: A4, B4, C#5, D5, E5, F#5, G#5, A5. The notation includes slurs and fingerings for each note.

A major arpeggio



Musical notation for the A major arpeggio, starting on A4 and ending on A5. The notes are: A4, C#5, E5, G#5, F#5, D5, B4, A4. The notation includes slurs and fingerings.

F# melodic minor scale



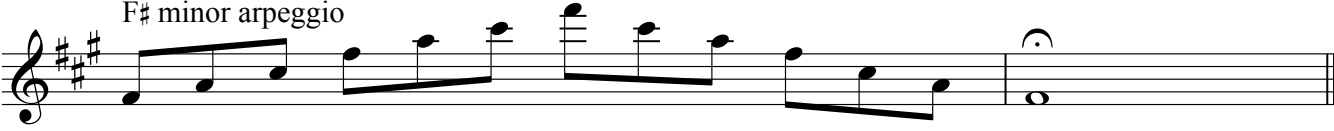
Musical notation for the F# melodic minor scale, starting on F#4 and ending on F#5. The scale is written in treble clef with a key signature of three sharps (F#, C#, G#). The notes are: F#4, G#4, A4, B4, C#5, D5, E5, F#5. The notation includes slurs and fingerings.

F# harmonic minor scale



Musical notation for the F# harmonic minor scale, starting on F#4 and ending on F#5. The scale is written in treble clef with a key signature of three sharps (F#, C#, G#). The notes are: F#4, G#4, A4, B4, C#5, D5, E5, F#5. The notation includes slurs and fingerings.

F# minor arpeggio



Musical notation for the F# minor arpeggio, starting on F#4 and ending on F#5. The notes are: F#4, A4, C#5, E5, D5, B4, G#4, F#4. The notation includes slurs and fingerings.

A chromatic scale



Musical notation for the A chromatic scale, starting on A4 and ending on A5. The scale is written in treble clef with a key signature of three sharps (F#, C#, G#). The notes are: A4, A#4, B4, B#4, C#5, C#5, D5, D#5, E5, E#5, F#5, F#5, G#5, G#5, A5. The notation includes slurs and fingerings.



Musical notation for the A chromatic scale, starting on A4 and ending on A5. The scale is written in treble clef with a key signature of three sharps (F#, C#, G#). The notes are: A4, A#4, B4, B#4, C#5, C#5, D5, D#5, E5, E#5, F#5, F#5, G#5, G#5, A5. The notation includes slurs and fingerings.

TG grade 8 flute

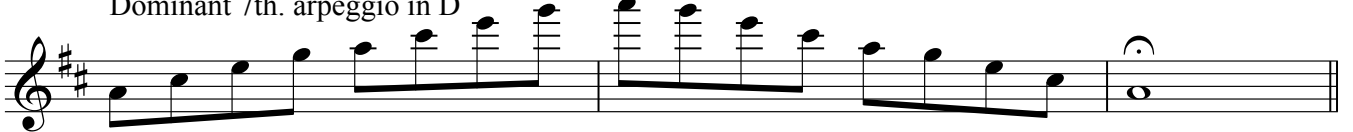
D major scale



D major arpeggio



Dominant 7th. arpeggio in D



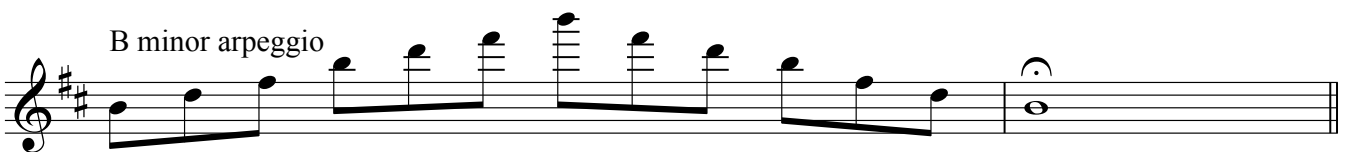
B melodic minor scale



B harmonic minor scale



B minor arpeggio



D chromatic scale



TG grade 8 flute

G major scale



Musical notation for the G major scale in treble clef, starting on G4. The scale is written in a single line with a key signature of one sharp (F#). It consists of an ascending eighth-note scale followed by a descending eighth-note scale, ending with a whole note G4.

G major arpeggio



Musical notation for the G major arpeggio in treble clef, starting on G4. The notes G4, B4, D5, G5, F#5, E5, D5, C#5, B4, A4, G4 are played in an ascending and then descending sequence, ending with a whole note G4.

E melodic minor scale



Musical notation for the E melodic minor scale in treble clef, starting on E4. The scale is written in a single line with a key signature of one sharp (F#). It consists of an ascending eighth-note scale with a raised 6th degree (D#5) and a descending eighth-note scale with a lowered 6th degree (D4), ending with a whole note E4.

E harmonic minor scale



Musical notation for the E harmonic minor scale in treble clef, starting on E4. The scale is written in a single line with a key signature of one sharp (F#). It consists of an ascending eighth-note scale with a raised 6th degree (D#5) and a descending eighth-note scale with a lowered 6th degree (D4), ending with a whole note E4.

E minor arpeggio



Musical notation for the E minor arpeggio in treble clef, starting on E4. The notes E4, G4, B4, E5, D5, C#5, B4, A4, G4, F#4, E4 are played in an ascending and then descending sequence, ending with a whole note E4.

G chromatic scale



Musical notation for the G chromatic scale in treble clef, starting on G4. The scale is written in a single line with a key signature of one sharp (F#). It consists of an ascending chromatic scale followed by a descending chromatic scale, ending with a whole note G4.



Musical notation for the G chromatic scale in treble clef, continuing from the previous block. It consists of a descending chromatic scale followed by an ascending chromatic scale, ending with a whole note G4.

TG grade 8 flute

C major scale

Two staves of musical notation for the C major scale. The first staff shows the ascending scale from middle C (C4) to C5. The second staff shows the descending scale from C5 to C4, ending with a whole note C4.

C major arpeggio

One staff of musical notation for the C major arpeggio. It consists of a sequence of eighth notes: C4, E4, G4, A4, B4, C5, B4, A4, G4, E4, C4, ending with a whole note C4.

C whole tone scale

One staff of musical notation for the C whole tone scale. It consists of a sequence of eighth notes: C4, D4, E4, F#4, G4, A4, B4, C5, B4, A4, G4, F#4, E4, D4, C4, ending with a whole note C4.

A melodic minor scale

Two staves of musical notation for the A melodic minor scale. The first staff shows the ascending scale from A3 to A4. The second staff shows the descending scale from A4 to A3, ending with a whole note A3.

A harmonic minor scale

Two staves of musical notation for the A harmonic minor scale. The first staff shows the ascending scale from A3 to A4. The second staff shows the descending scale from A4 to A3, ending with a whole note A3.

A minor arpeggio

One staff of musical notation for the A minor arpeggio. It consists of a sequence of eighth notes: A3, C4, E4, F4, G4, A4, G4, F4, E4, C4, A3, ending with a whole note A3.

C chromatic scale

Three staves of musical notation for the C chromatic scale. The first staff shows the ascending scale from C4 to C5. The second staff shows the descending scale from C5 to C4. The third staff shows the descending scale from C5 to C4, ending with a whole note C4.

TG grade 8 flute

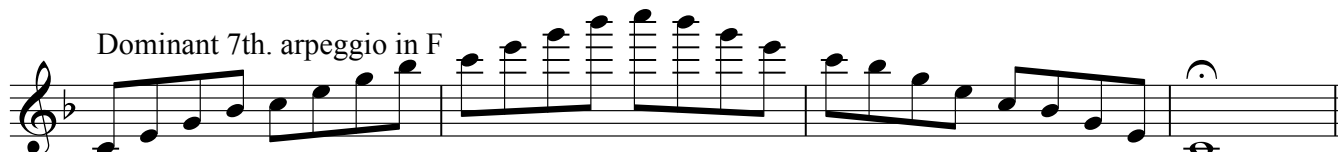
F major scale



F major arpeggio



Dominant 7th. arpeggio in F



Diminished 7th. on E (Dominant minor 9th. in F)



D melodic minor scale



D harmonic minor scale



D minor arpeggio



F chromatic scale




F whole tone scale



TG grade 8 flute

B \flat major scale



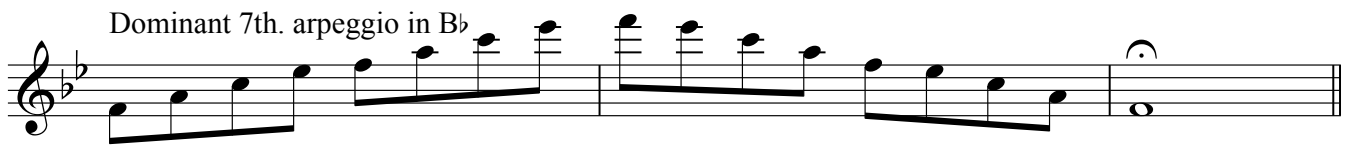
Musical notation for the B \flat major scale, starting on B \flat and ending on B \flat . The scale is written in treble clef with a key signature of two flats. It consists of eight measures: four ascending and four descending, with a final whole note B \flat .

B \flat major arpeggio



Musical notation for the B \flat major arpeggio, starting on B \flat and ending on B \flat . The arpeggio is written in treble clef with a key signature of two flats. It consists of four measures: two ascending and two descending, with a final whole note B \flat .

Dominant 7th. arpeggio in B \flat



Musical notation for the dominant 7th arpeggio in B \flat , starting on B \flat and ending on B \flat . The arpeggio is written in treble clef with a key signature of two flats. It consists of four measures: two ascending and two descending, with a final whole note B \flat .

G melodic minor scale



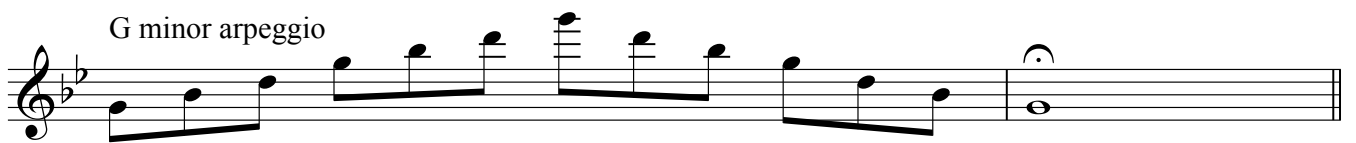
Musical notation for the G melodic minor scale, starting on G and ending on G. The scale is written in treble clef with a key signature of two flats. It consists of eight measures: four ascending and four descending, with a final whole note G.

G harmonic minor scale



Musical notation for the G harmonic minor scale, starting on G and ending on G. The scale is written in treble clef with a key signature of two flats. It consists of eight measures: four ascending and four descending, with a final whole note G.

G minor arpeggio



Musical notation for the G minor arpeggio, starting on G and ending on G. The arpeggio is written in treble clef with a key signature of two flats. It consists of four measures: two ascending and two descending, with a final whole note G.

B \flat chromatic scale



Musical notation for the B \flat chromatic scale, starting on B \flat and ending on B \flat . The scale is written in treble clef with a key signature of two flats. It consists of eight measures: four ascending and four descending, with a final whole note B \flat .



Musical notation for the B \flat chromatic scale, starting on B \flat and ending on B \flat . The scale is written in treble clef with a key signature of two flats. It consists of four measures: two ascending and two descending, with a final whole note B \flat .

TG grade 8 flute

E \flat major scale

Musical notation for the E-flat major scale in treble clef, spanning two staves. The first staff shows the ascending scale, and the second staff shows the descending scale. The key signature has three flats (B-flat, E-flat, A-flat).

E \flat major arpeggio

Musical notation for the E-flat major arpeggio in treble clef, spanning two staves. The first staff shows the ascending arpeggio, and the second staff shows the descending arpeggio.

Dominant 7th. arpeggio in E \flat

Musical notation for the dominant 7th arpeggio in E-flat in treble clef, spanning two staves. The first staff shows the ascending arpeggio, and the second staff shows the descending arpeggio.

C melodic minor scale

Musical notation for the C melodic minor scale in treble clef, spanning two staves. The first staff shows the ascending scale, and the second staff shows the descending scale. The key signature has three flats (B-flat, E-flat, A-flat).

Musical notation for the C melodic minor scale in treble clef, spanning two staves. The first staff shows the ascending scale, and the second staff shows the descending scale. The key signature has three flats (B-flat, E-flat, A-flat).

C harmonic minor scale

Musical notation for the C harmonic minor scale in treble clef, spanning two staves. The first staff shows the ascending scale, and the second staff shows the descending scale. The key signature has three flats (B-flat, E-flat, A-flat).

Musical notation for the C harmonic minor scale in treble clef, spanning two staves. The first staff shows the ascending scale, and the second staff shows the descending scale. The key signature has three flats (B-flat, E-flat, A-flat).

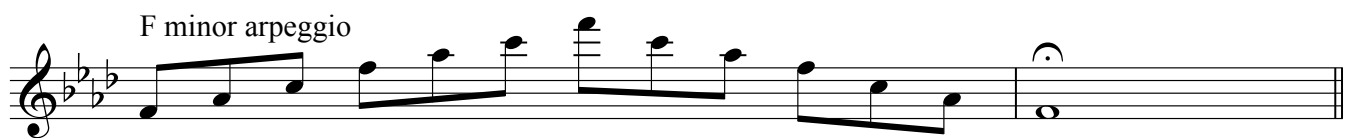
C minor arpeggio

Musical notation for the C minor arpeggio in treble clef, spanning two staves. The first staff shows the ascending arpeggio, and the second staff shows the descending arpeggio. The key signature has three flats (B-flat, E-flat, A-flat).

E \flat chromatic scale

Musical notation for the E-flat chromatic scale in treble clef, spanning two staves. The first staff shows the ascending chromatic scale, and the second staff shows the descending chromatic scale. The key signature has three flats (B-flat, E-flat, A-flat).

Musical notation for the E-flat chromatic scale in treble clef, spanning two staves. The first staff shows the ascending chromatic scale, and the second staff shows the descending chromatic scale. The key signature has three flats (B-flat, E-flat, A-flat).

TG grade 8 flute

TG grade 8 flute

D \flat major scale



Musical notation for the D \flat major scale, starting on C \flat (B \flat), ascending and descending in eighth notes, ending with a whole note C \flat .

D \flat major arpeggio



Musical notation for the D \flat major arpeggio, starting on C \flat (B \flat), ascending in eighth notes, then descending in eighth notes, ending with a whole note C \flat .

Diminished 7th. on C (Dominant minor 9th. in D \flat)



Musical notation for a diminished 7th chord on C, starting on C \flat (B \flat), ascending in eighth notes, then descending in eighth notes, ending with a whole note C \flat .

B \flat melodic minor scale



Musical notation for the B \flat melodic minor scale, starting on B \flat , ascending and descending in eighth notes, ending with a whole note B \flat .

B \flat harmonic minor scale



Musical notation for the B \flat harmonic minor scale, starting on B \flat , ascending and descending in eighth notes, ending with a whole note B \flat .

B \flat minor arpeggio



Musical notation for the B \flat minor arpeggio, starting on B \flat , ascending in eighth notes, then descending in eighth notes, ending with a whole note B \flat .

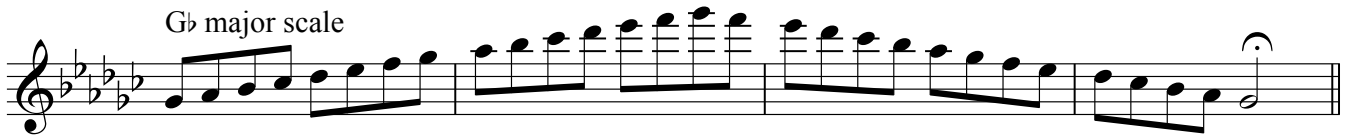
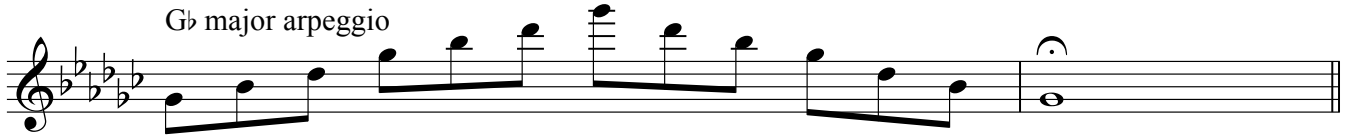
D \flat chromatic scale



Musical notation for the D \flat chromatic scale, starting on C \flat (B \flat), ascending and descending in eighth notes, ending with a whole note C \flat .

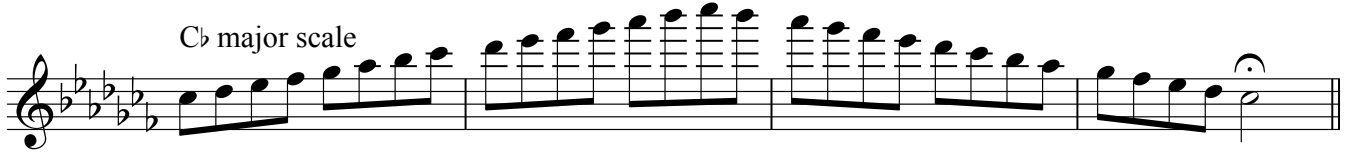


Musical notation for the D \flat chromatic scale, starting on C \flat (B \flat), ascending and descending in eighth notes, ending with a whole note C \flat .

*TG grade 8 flute*G \flat major scaleG \flat major arpeggioDiminished 7th. on F (Dominant minor 9th. in G \flat)E \flat melodic minor scaleE \flat harmonic minor scaleE \flat minor arpeggioG \flat chromatic scale

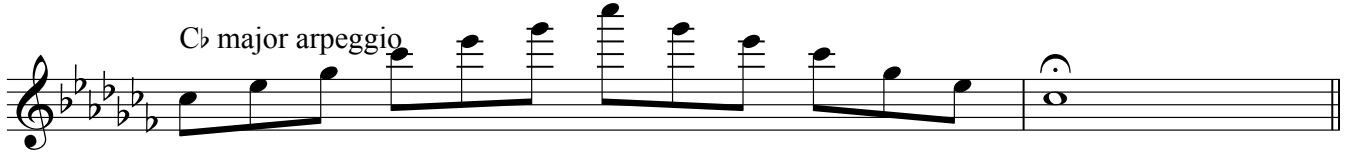
TG grade 8 flute

C \flat major scale



Musical notation for the C \flat major scale, starting on C \flat (B \flat on the staff) and ascending to C \flat (B \flat on the staff) in the next measure. The scale is written in treble clef with a key signature of three flats (B \flat , E \flat , A \flat) and a common time signature. The notes are: B \flat , C \flat , D \flat , E \flat , F \flat , G \flat , A \flat , B \flat , C \flat .

C \flat major arpeggio



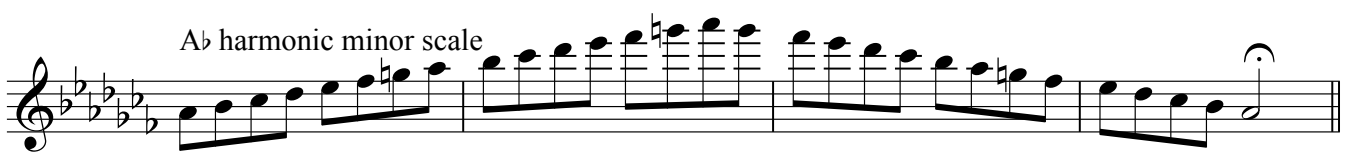
Musical notation for the C \flat major arpeggio, starting on C \flat (B \flat on the staff) and ascending to C \flat (B \flat on the staff) in the next measure. The notes are: B \flat , C \flat , E \flat , G \flat , B \flat , C \flat .

A \flat melodic minor scale



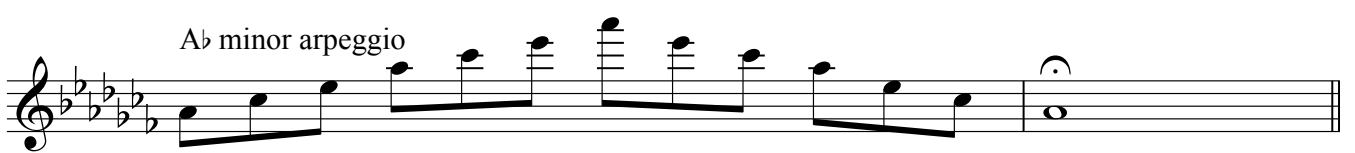
Musical notation for the A \flat melodic minor scale, starting on A \flat (G on the staff) and ascending to A \flat (G on the staff) in the next measure. The scale is written in treble clef with a key signature of three flats (B \flat , E \flat , A \flat) and a common time signature. The notes are: G, A \flat , B \flat , C \flat , D \flat , E \flat , F \flat , G.

A \flat harmonic minor scale



Musical notation for the A \flat harmonic minor scale, starting on A \flat (G on the staff) and ascending to A \flat (G on the staff) in the next measure. The scale is written in treble clef with a key signature of three flats (B \flat , E \flat , A \flat) and a common time signature. The notes are: G, A \flat , B \flat , C \flat , D \flat , E \flat , F \flat , G.

A \flat minor arpeggio



Musical notation for the A \flat minor arpeggio, starting on A \flat (G on the staff) and ascending to A \flat (G on the staff) in the next measure. The notes are: G, A \flat , C \flat , E \flat , G.

C \flat chromatic scale



Musical notation for the C \flat chromatic scale, starting on C \flat (B \flat on the staff) and ascending to C \flat (B \flat on the staff) in the next measure. The scale is written in treble clef with a key signature of three flats (B \flat , E \flat , A \flat) and a common time signature. The notes are: B \flat , B \flat , C \flat , C \flat , D \flat , D \flat , E \flat , E \flat , F \flat , F \flat , G \flat , G \flat , A \flat , A \flat , B \flat , B \flat , C \flat .



Musical notation for the C \flat chromatic scale, starting on C \flat (B \flat on the staff) and ascending to C \flat (B \flat on the staff) in the next measure. The notes are: C \flat , C \flat , D \flat , D \flat , E \flat , E \flat , F \flat , F \flat , G \flat , G \flat , A \flat , A \flat , B \flat , B \flat , C \flat .