

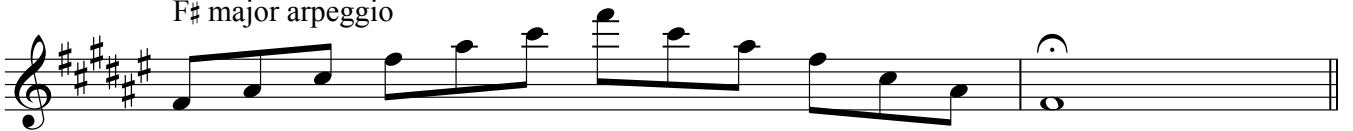
TG Grade 7 Flute - Scales and Arpeggios

The following scales to be performed **f** or **p** from memory; tongued, slurred or staccato-tongued.
Minor scales should be prepared in both forms.

F# major scale



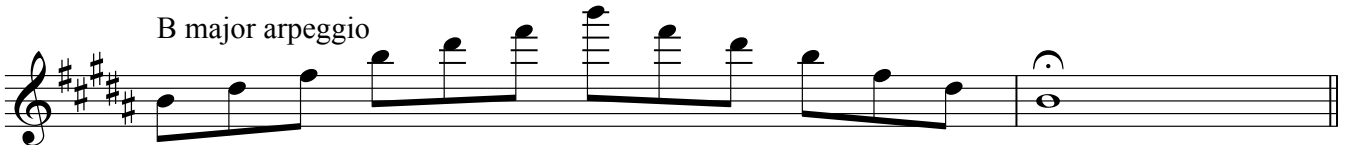
F# major arpeggio



B major scale



B major arpeggio



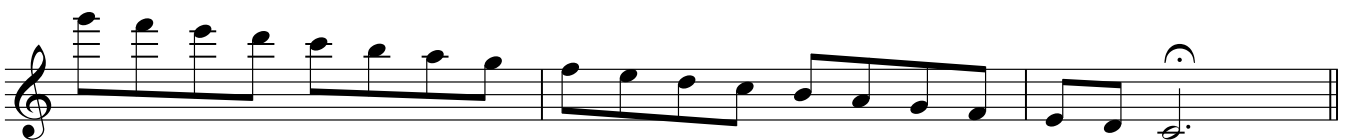
E major scale



E major arpeggio



C major scale



C major arpeggio



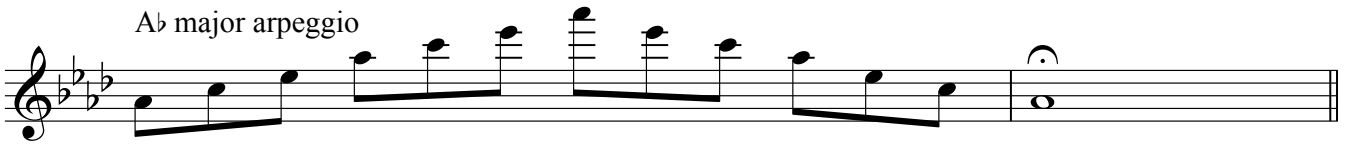
A♭ major scale



TG grade 7 flute

2

A \flat major arpeggio



D \flat major scale



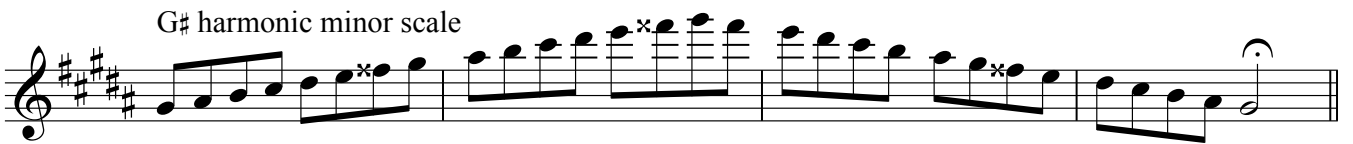
D \flat major arpeggio



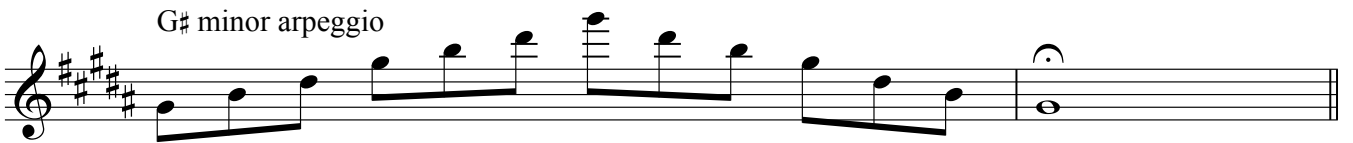
G \sharp melodic minor scale



G \sharp harmonic minor scale



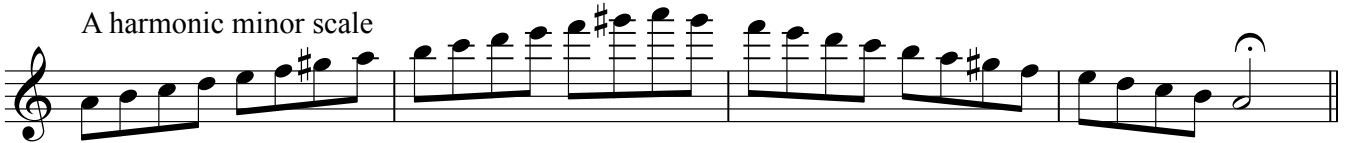
G \sharp minor arpeggio



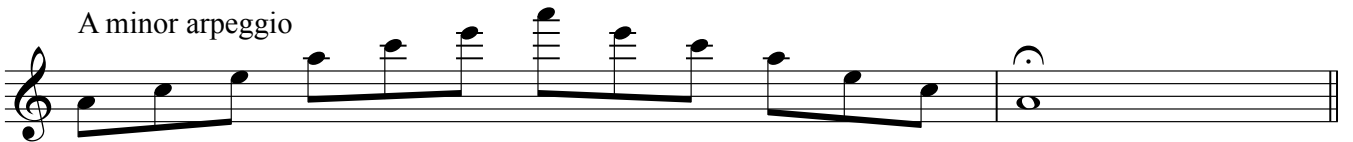
A melodic minor scale



A harmonic minor scale



A minor arpeggio



G melodic minor scale

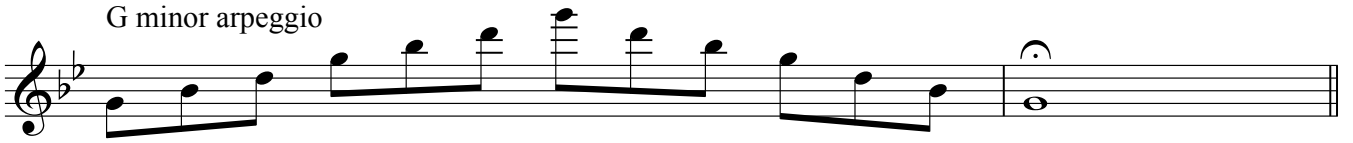


G harmonic minor scale



TG grade 7 flute

G minor arpeggio



C melodic minor scale



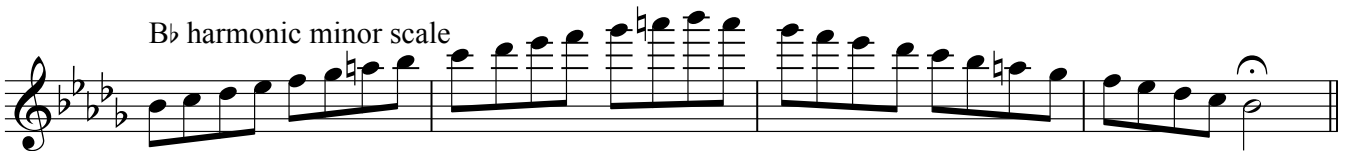
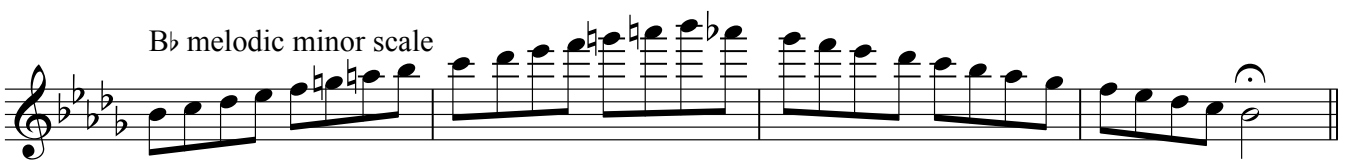
C harmonic minor scale



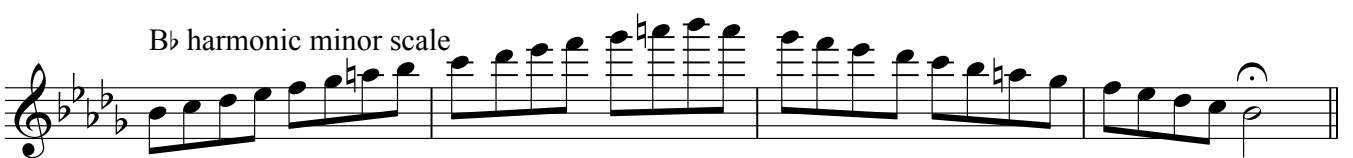
C minor arpeggio



Bb melodic minor scale



Bb harmonic minor scale



Bb minor arpeggio



Eb melodic minor scale




TG grade 7 flute

E \flat harmonic minor scale



Musical notation for the E \flat harmonic minor scale, consisting of a single staff with a treble clef and a key signature of three flats (B \flat , E \flat , A \flat). The scale is written in eighth notes, ascending and then descending, ending with a whole note E \flat .

E \flat minor arpeggio



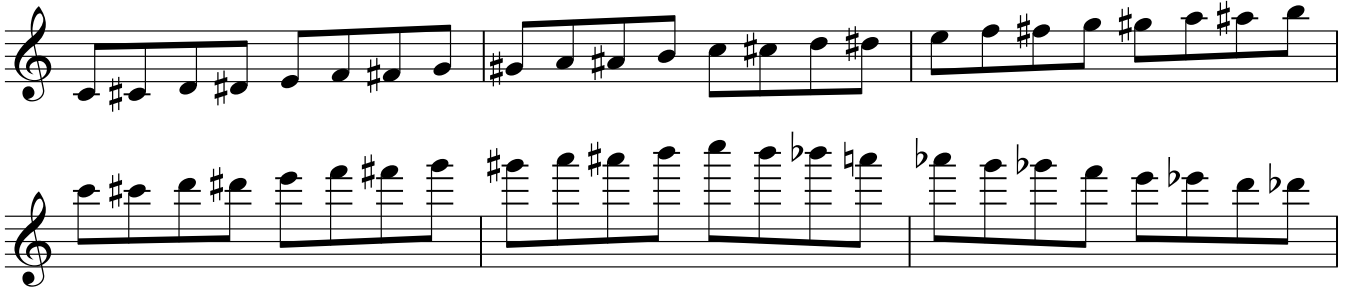
Musical notation for the E \flat minor arpeggio, consisting of a single staff with a treble clef and a key signature of three flats. The notes E \flat , G \flat , and B \flat are played in a sequence of eighth notes, ascending and then descending, ending with a whole note E \flat .

E whole tone scale



Musical notation for the E whole tone scale, consisting of a single staff with a treble clef and a key signature of three sharps (F \sharp , C \sharp , G \sharp). The scale is written in eighth notes, ascending and then descending, ending with a whole note E.

C chromatic scale



Musical notation for the C chromatic scale, consisting of two staves with a treble clef. The first staff shows the ascending scale in eighth notes, and the second staff shows the descending scale in eighth notes, ending with a whole note C.



Continuation of the C chromatic scale, showing the final descending eighth notes and the final whole note C.

G pentatonic major scale



Musical notation for the G pentatonic major scale, consisting of a single staff with a treble clef and a key signature of one sharp (F \sharp). The scale is written in eighth notes, ascending and then descending, ending with a whole note G.

Dominant 7th. in A



Musical notation for the dominant 7th chord in A, consisting of a single staff with a treble clef and a key signature of three sharps (F \sharp , C \sharp , G \sharp). The notes A, C \sharp , E, and G \sharp are played in a sequence of eighth notes, ascending and then descending, ending with a whole note A.

Dominant 7th. in E \flat



Musical notation for the dominant 7th chord in E \flat , consisting of a single staff with a treble clef and a key signature of three flats (B \flat , E \flat , A \flat). The notes E \flat , G \flat , B \flat , and D \flat are played in a sequence of eighth notes, ascending and then descending, ending with a whole note E \flat .

Diminished 7th. on F \sharp (in G)



Musical notation for the diminished 7th chord on F \sharp (in G), consisting of a single staff with a treble clef and a key signature of one sharp (F \sharp). The notes F \sharp , A \flat , C \flat , and E \flat are played in a sequence of eighth notes, ascending and then descending, ending with a whole note F \sharp .