

TG Grade 8 Clarinet - Scales and Arpeggios

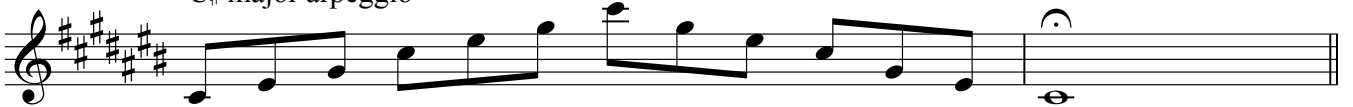
The following scales to be performed **f** or **p** from memory; tongued, slurred, staccato-tongued or using mixed articulation, as requested by the examiner.

Each page of the following exercises is devoted to one key signature.

C# major scale



C# major arpeggio



A# melodic minor scale



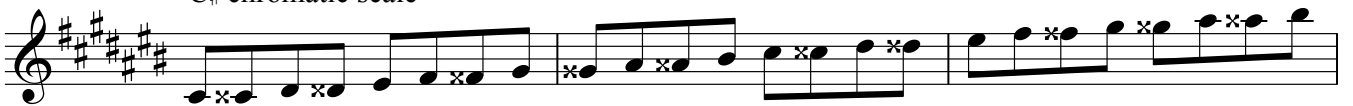
A# harmonic minor scale



A# minor arpeggio



C# chromatic scale



TG grade 8 clarinet

F# major scale

Musical notation for the F# major scale, consisting of two staves. The upper staff contains the ascending and descending scales, while the lower staff provides a bass line accompaniment.

F# major arpeggio

Musical notation for the F# major arpeggio, consisting of two staves. The upper staff shows the arpeggiated notes, and the lower staff provides a bass line accompaniment.

Diminished 7th. on E# (Dominant minor 9th. in F#)

Musical notation for a diminished 7th chord on E# (Dominant minor 9th in F#), consisting of two staves. The upper staff shows the arpeggiated notes, and the lower staff provides a bass line accompaniment.

D# melodic minor scale

Musical notation for the D# melodic minor scale, consisting of two staves. The upper staff shows the ascending and descending scales with accidentals, and the lower staff provides a bass line accompaniment.

D# harmonic minor scale

Musical notation for the D# harmonic minor scale, consisting of two staves. The upper staff shows the ascending and descending scales with accidentals, and the lower staff provides a bass line accompaniment.

D# minor arpeggio

Musical notation for the D# minor arpeggio, consisting of two staves. The upper staff shows the arpeggiated notes, and the lower staff provides a bass line accompaniment.

F# chromatic scale

Musical notation for the F# chromatic scale, consisting of two staves. The upper staff shows the ascending and descending chromatic scales, and the lower staff provides a bass line accompaniment.

Continuation of the F# chromatic scale musical notation, consisting of two staves. The upper staff shows the ascending and descending chromatic scales, and the lower staff provides a bass line accompaniment.

Continuation of the F# chromatic scale musical notation, consisting of two staves. The upper staff shows the ascending and descending chromatic scales, and the lower staff provides a bass line accompaniment.

TG grade 8 clarinet

B major scale



Musical notation for the B major scale, starting on B4 and ending on B5. The key signature has four sharps (F#, C#, G#, D#). The scale is written in a single line on a treble clef staff.

B major arpeggio



Musical notation for the B major arpeggio, starting on B4 and ending on B5. The key signature has four sharps (F#, C#, G#, D#). The arpeggio is written in a single line on a treble clef staff.

Dominant 7th. arpeggio in B



Musical notation for the Dominant 7th. arpeggio in B, starting on B4 and ending on B5. The key signature has four sharps (F#, C#, G#, D#). The arpeggio is written in a single line on a treble clef staff.

G# melodic minor scale



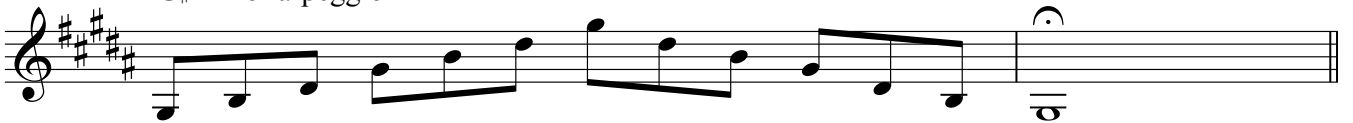
Musical notation for the G# melodic minor scale, starting on G#4 and ending on G#5. The key signature has four sharps (F#, C#, G#, D#). The scale is written in a single line on a treble clef staff.

G# harmonic minor scale



Musical notation for the G# harmonic minor scale, starting on G#4 and ending on G#5. The key signature has four sharps (F#, C#, G#, D#). The scale is written in a single line on a treble clef staff.

G# minor arpeggio



Musical notation for the G# minor arpeggio, starting on G#4 and ending on G#5. The key signature has four sharps (F#, C#, G#, D#). The arpeggio is written in a single line on a treble clef staff.

B chromatic scale



Musical notation for the B chromatic scale, starting on B4 and ending on B5. The key signature has four sharps (F#, C#, G#, D#). The scale is written in a single line on a treble clef staff.



Musical notation for the B chromatic scale, starting on B4 and ending on B5. The key signature has four sharps (F#, C#, G#, D#). The scale is written in a single line on a treble clef staff.

TG grade 8 clarinet

E major scale

Two staves of music showing the E major scale. The first staff contains the ascending scale (E4 to E5) and the second staff contains the descending scale (E5 to E4). The key signature has three sharps (F#, C#, G#).

E major arpeggio

Two staves of music showing the E major arpeggio. The first staff contains the ascending arpeggio (E4, G#4, B4) and the second staff contains the descending arpeggio (B4, G#4, E4). The key signature has three sharps (F#, C#, G#).

C# melodic minor scale

Two staves of music showing the C# melodic minor scale. The first staff contains the ascending scale (C#4 to C#5) and the second staff contains the descending scale (C#5 to C#4). The key signature has three sharps (F#, C#, G#).

C# harmonic minor scale

Two staves of music showing the C# harmonic minor scale. The first staff contains the ascending scale (C#4 to C#5) and the second staff contains the descending scale (C#5 to C#4). The key signature has three sharps (F#, C#, G#).

C# minor arpeggio

Two staves of music showing the C# minor arpeggio. The first staff contains the ascending arpeggio (C#4, E4, G#4) and the second staff contains the descending arpeggio (G#4, E4, C#4). The key signature has three sharps (F#, C#, G#).

E chromatic scale

Two staves of music showing the E chromatic scale. The first staff contains the ascending chromatic scale (E4 to E5) and the second staff contains the descending chromatic scale (E5 to E4). The key signature has three sharps (F#, C#, G#).

TG grade 8 clarinet

A major scale

Musical notation for the A major scale in treble clef, key signature of three sharps (F#, C#, G#). The scale is written in quarter notes, ascending and then descending, ending with a whole note A.

A major arpeggio

Musical notation for the A major arpeggio in treble clef, key signature of three sharps. The notes A, C#, E, and G# are played in quarter notes, ascending and then descending, ending with a whole note A.

Dominant 7th. arpeggio in A

Musical notation for the dominant 7th arpeggio in A in treble clef, key signature of three sharps. The notes A, C#, E, G#, and B are played in quarter notes, ascending and then descending, ending with a whole note A.

F# melodic minor scale

Musical notation for the F# melodic minor scale in treble clef, key signature of three sharps. The scale is written in quarter notes, ascending and then descending, ending with a whole note F#.

Musical notation for the F# melodic minor scale in treble clef, key signature of three sharps. The scale is written in quarter notes, ascending and then descending, ending with a whole note F#.

F# harmonic minor scale

Musical notation for the F# harmonic minor scale in treble clef, key signature of three sharps. The scale is written in quarter notes, ascending and then descending, ending with a whole note F#.

Musical notation for the F# harmonic minor scale in treble clef, key signature of three sharps. The scale is written in quarter notes, ascending and then descending, ending with a whole note F#.

F# minor arpeggio

Musical notation for the F# minor arpeggio in treble clef, key signature of three sharps. The notes F#, A, C, and E are played in quarter notes, ascending and then descending, ending with a whole note F#.

A chromatic scale

Musical notation for the A chromatic scale in treble clef, key signature of three sharps. The scale is written in quarter notes, ascending and then descending, ending with a whole note A.

Musical notation for the A chromatic scale in treble clef, key signature of three sharps. The scale is written in quarter notes, ascending and then descending, ending with a whole note A.

TG grade 8 clarinet

D major scale



D major arpeggio



B melodic minor scale



B harmonic minor scale



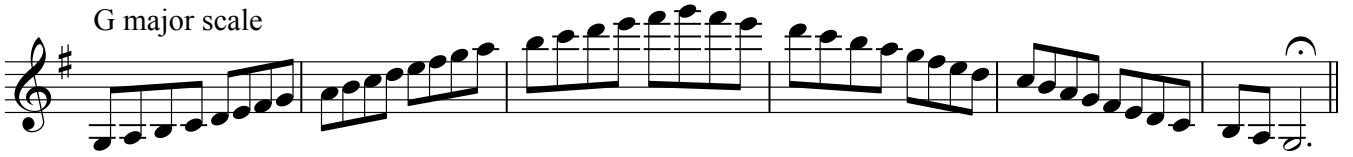
B minor arpeggio



D chromatic scale



G major scale



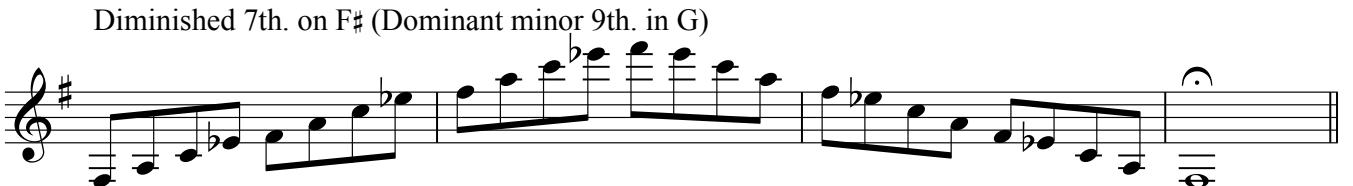
Musical notation for the G major scale, starting on G4 and ending on G5. The scale is written in treble clef with a key signature of one sharp (F#).

G major arpeggio



Musical notation for the G major arpeggio, starting on G4 and ending on G5. The arpeggio is written in treble clef with a key signature of one sharp (F#).

Diminished 7th. on F# (Dominant minor 9th. in G)

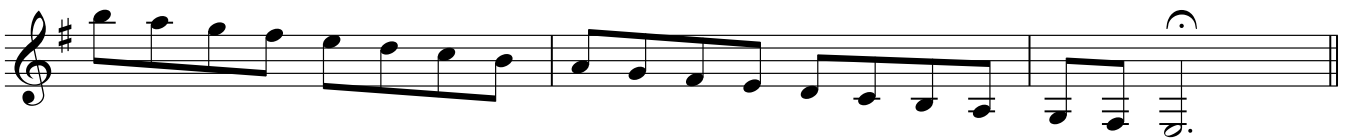


Musical notation for a diminished 7th chord on F#, starting on F#4 and ending on F#5. The chord is written in treble clef with a key signature of one sharp (F#).

E melodic minor scale

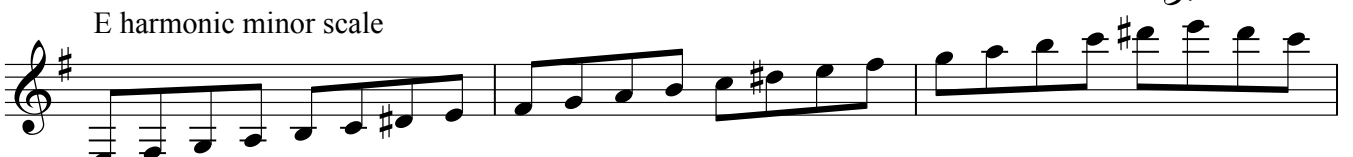


Musical notation for the E melodic minor scale, starting on E4 and ending on E5. The scale is written in treble clef with a key signature of two sharps (F# and C#).

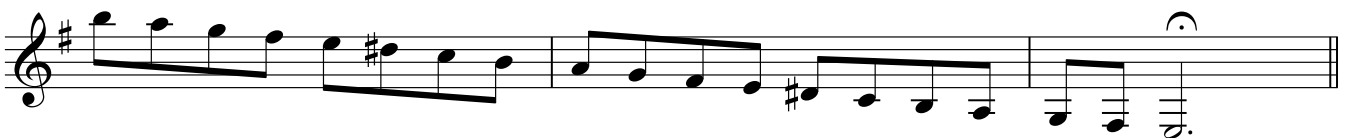


Musical notation for the E melodic minor scale, starting on E4 and ending on E5. The scale is written in treble clef with a key signature of two sharps (F# and C#).

E harmonic minor scale



Musical notation for the E harmonic minor scale, starting on E4 and ending on E5. The scale is written in treble clef with a key signature of two sharps (F# and C#).



Musical notation for the E harmonic minor scale, starting on E4 and ending on E5. The scale is written in treble clef with a key signature of two sharps (F# and C#).

E minor arpeggio



Musical notation for the E minor arpeggio, starting on E4 and ending on E5. The arpeggio is written in treble clef with a key signature of two sharps (F# and C#).

G chromatic scale



Musical notation for the G chromatic scale, starting on G4 and ending on G5. The scale is written in treble clef with a key signature of one sharp (F#).



Musical notation for the G chromatic scale, starting on G4 and ending on G5. The scale is written in treble clef with a key signature of one sharp (F#).



Musical notation for the G chromatic scale, starting on G4 and ending on G5. The scale is written in treble clef with a key signature of one sharp (F#).

TG grade 8 clarinet

C major scale



C major arpeggio



Dominant 7th. arpeggio in C



A melodic minor scale



A harmonic minor scale



A minor arpeggio



C chromatic scale



TG grade 8 clarinet

F major scale

Musical notation for the F major scale, starting on F4 and ascending to F5. The scale is written in treble clef with a key signature of one flat (Bb). The notes are: F, G, A, Bb, C, D, E, F. The scale is played in a single line with a final fermata on the final F.

F major arpeggio

Musical notation for the F major arpeggio, starting on F4 and ascending to F5. The notes are: F, A, C, E, F. The scale is written in treble clef with a key signature of one flat (Bb). The arpeggio is played in a single line with a final fermata on the final F.

Diminished 7th. on E (Dominant minor 9th. in F)

Musical notation for a diminished 7th chord on E, starting on E4 and ascending to E5. The notes are: E, F, G, Ab, E. The scale is written in treble clef with a key signature of one flat (Bb). The chord is played in a single line with a final fermata on the final E.

D melodic minor scale

Musical notation for the D melodic minor scale, starting on D4 and ascending to D5. The scale is written in treble clef with a key signature of one flat (Bb). The notes are: D, E, F, G, Ab, A, B, C, D. The scale is played in a single line with a final fermata on the final D.

D harmonic minor scale

Musical notation for the D harmonic minor scale, starting on D4 and ascending to D5. The scale is written in treble clef with a key signature of one flat (Bb). The notes are: D, E, F, G, Ab, B, C, D. The scale is played in a single line with a final fermata on the final D.

D minor arpeggio

Musical notation for the D minor arpeggio, starting on D4 and ascending to D5. The notes are: D, F, A, D. The scale is written in treble clef with a key signature of one flat (Bb). The arpeggio is played in a single line with a final fermata on the final D.

F chromatic scale

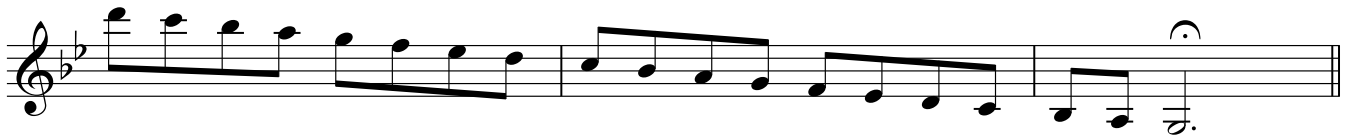
Musical notation for the F chromatic scale, starting on F4 and ascending to F5. The scale is written in treble clef with a key signature of one flat (Bb). The notes are: F, F#, G, G#, A, Ab, A, Bb, B, C, C#, C, D, D#, D, E, Eb, E, F. The scale is played in two lines with a final fermata on the final F.

F whole tone scale

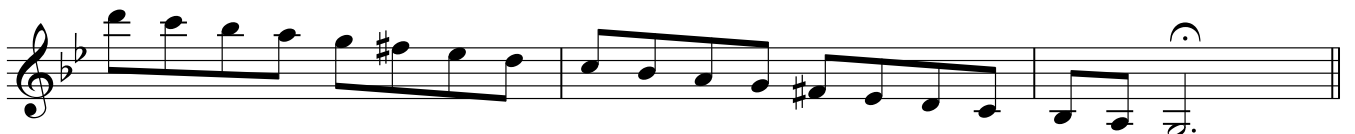
Musical notation for the F whole tone scale, starting on F4 and ascending to F5. The scale is written in treble clef with a key signature of one flat (Bb). The notes are: F, G, Ab, Bb, C, D, Eb, F. The scale is played in a single line with a final fermata on the final F.

*TG grade 8 clarinet*B \flat major scaleB \flat major arpeggioDominant 7th. arpeggio in B \flat 

G melodic minor scale



G harmonic minor scale



G minor arpeggio

B \flat chromatic scale

*TG grade 8 clarinet*E \flat major scaleE \flat major arpeggio

C melodic minor scale



C harmonic minor scale

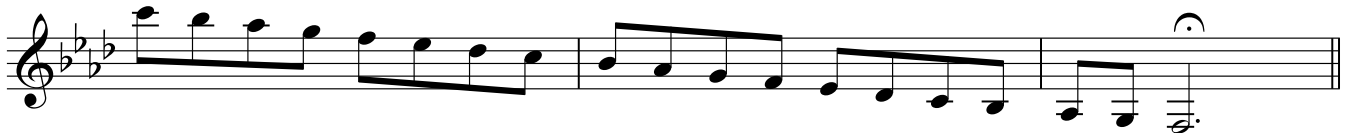


C minor arpeggio

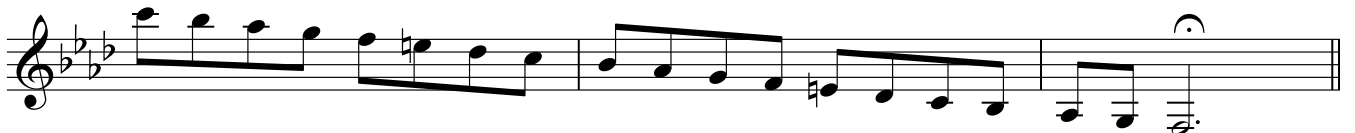
E \flat chromatic scale

*TG grade 8 clarinet*A \flat major scaleA \flat major arpeggio

F melodic minor scale



F harmonic minor scale



F minor arpeggio

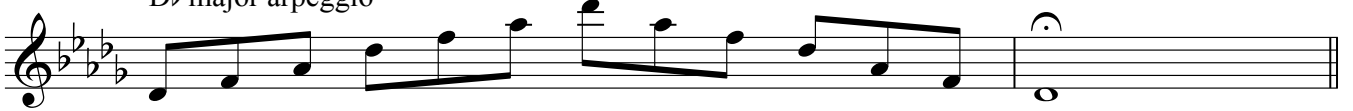
A \flat chromatic scale

TG grade 8 clarinet

D \flat major scale



D \flat major arpeggio



B \flat melodic minor scale



B \flat harmonic minor scale



B \flat minor arpeggio



D \flat chromatic scale



TG grade 8 clarinet

G \flat major scale

Two staves of musical notation for the G \flat major scale. The first staff shows the ascending scale from G \flat to G \flat (octave). The second staff shows the descending scale from G \flat to G \flat (octave), ending with a fermata on the final G \flat .

G \flat major arpeggio

Two staves of musical notation for the G \flat major arpeggio. The first staff shows the ascending arpeggio (G \flat , B \flat , D \flat , E \flat , F, G \flat). The second staff shows the descending arpeggio (G \flat , F, E \flat , D \flat , B \flat , G \flat), ending with a fermata on the final G \flat .

Diminished 7th. on F (Dominant minor 9th. in G \flat)

Two staves of musical notation for a diminished 7th chord on F. The first staff shows the ascending scale of the chord (F, G \flat , A \flat , B \flat , C \flat , D \flat , E \flat , F). The second staff shows the descending scale (F, E \flat , D \flat , C \flat , B \flat , A \flat , G \flat , F), ending with a fermata on the final F.

E \flat melodic minor scale

Two staves of musical notation for the E \flat melodic minor scale. The first staff shows the ascending scale (E \flat , F, G, A, B \flat , C \flat , D \flat , E \flat). The second staff shows the descending scale (E \flat , D \flat , C \flat , B \flat , A, G, F, E \flat), ending with a fermata on the final E \flat .

E \flat harmonic minor scale

Two staves of musical notation for the E \flat harmonic minor scale. The first staff shows the ascending scale (E \flat , F, G, A, B \flat , C \flat , D \flat , E \flat). The second staff shows the descending scale (E \flat , D \flat , C \flat , B \flat , A, G, F, E \flat), ending with a fermata on the final E \flat .

E \flat minor arpeggio

Two staves of musical notation for the E \flat minor arpeggio. The first staff shows the ascending arpeggio (E \flat , G \flat , B \flat , C \flat , D \flat , E \flat). The second staff shows the descending arpeggio (E \flat , D \flat , C \flat , B \flat , G \flat , E \flat), ending with a fermata on the final E \flat .

G \flat chromatic scale

Two staves of musical notation for the G \flat chromatic scale. The first staff shows the ascending chromatic scale from G \flat to G \flat (octave). The second staff shows the descending chromatic scale from G \flat to G \flat (octave), ending with a fermata on the final G \flat .

Two staves of musical notation for the G \flat chromatic scale. The first staff shows the ascending chromatic scale from G \flat to G \flat (octave). The second staff shows the descending chromatic scale from G \flat to G \flat (octave), ending with a fermata on the final G \flat .

TG grade 8 clarinet

C \flat major scale



C \flat major arpeggio



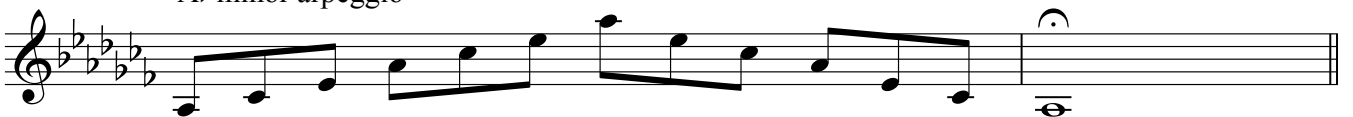
A \flat melodic minor scale



A \flat harmonic minor scale



A \flat minor arpeggio



C \flat chromatic scale

